

# WUIVIEW

Wildland-Urban-Interface Virtual Essays Workbench



Funded by the "ECHO - EU Civil Protection Mechanism" under grant agreement number ECHO/2018/826522.

## Consortium

**UPC** - Universitat Politècnica de Catalunya (Coord.), Spain

**ADAI** - Associação para o Desenvolvimento da Aerodinâmica Industrial, Portugal

**PCF** - Fundació d'Ecologia del Foc i Gestió d'Incendis Pau Costa Alcubierre, Spain

**ARMINES** - Association pour la Recherche et le Développement des Methodes et Processus Industriels, France

**UNIBO** - Alma Mater Studiorum Università di Bologna, Italy

**RISE** - Rise Research Institutes of Sweden AB, Sweden



## General Objective

The aim of WUIVIEW project is to design, setup, test and operate a virtual workbench service for the performance-based analysis of fire environments in the surroundings of buildings at the wildland-urban interface.

Survey of recent WUI fires

Summary of observations

Identification of pattern scenarios

Problem-oriented research needs

Problem analysis

Recommendations / tools

**The WUIVIEW workflow**

In line with the objectives of the European Union's Civil Protection Mechanism, the WUIVIEW action will develop an innovative risk management tool that will help WUI communities adapting to face the new generation of forest fires that have already arisen due to climate change. Once implemented, WUIVIEW will become a powerful platform to perform essays and simulation studies dealing with structures survivability, sheltering

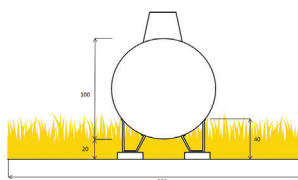
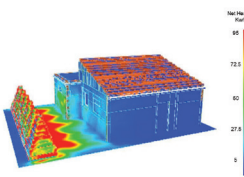
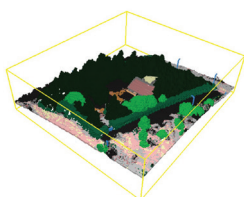
assessment, building subsystems hazard testing and fire protection systems evaluation. The development of the system will improve knowledge base on microscale fuel fire hazards and on building systems and materials vulnerability, which will be of help to develop better policies and standards to prevent WUI disasters.

## Expected results

- Improve knowledge base on WUI fire risk management at home owner scale.

- Improve awareness on WUI microscale fire risk management problem, strengthening the links between relevant WUI fire risk actors.

- Provide fire practitioners with new capabilities for fire risk managing, engineering, research, and fire safety building design.



[www.wuiview.org](http://www.wuiview.org)



@wuiview